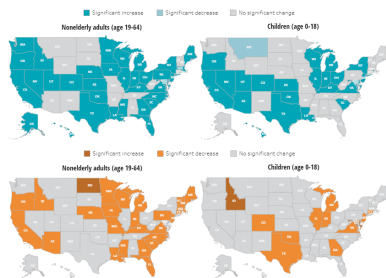


Is this email not displaying correctly? [View it in your browser.](#)



## Welcome to the New Year!

*As we kick off 2023, we look forward to building on all the important and exciting work from the past year. In this special edition of the SHADAC newsletter, we invite you to take a look back at a selection of SHADAC's most popular blogs and publications from 2022.*



### 2021 ACS: 28 States Saw Decline in Uninsurance Rates, Driven by Rise in Public Coverage and Fall in Private Coverage

As part of SHADAC's annual fall data release, researchers used the American Community Survey (ACS) to track health insurance rates by coverage type throughout 2021.

Supported by interactive 50-state maps, this blog broke down coverage rates between nonelderly adults (19-64) and children (0-18). [Read more](#)

### FPG vs. FPL: What's the Difference?

The terms federal poverty guideline (FPG) and federal poverty level (FPL) are often used interchangeably, but they are not actually the same thing; there are, in fact, important functional differences between the two concepts. This blog detailed the important differences (such as poverty thresholds) between FPG and FPL, with each measurement serving unique purposes for a variety of federal programs. [Read more](#)



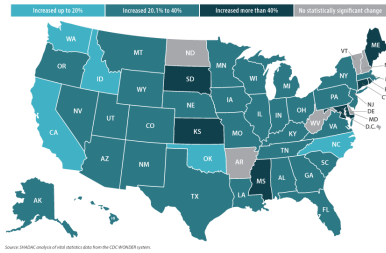
### Assessing Physician Acceptance of Medicaid Patients Using State Health Compare

There has long been concern that providers are less likely to accept Medicaid patients than patients with other types of health insurance coverage, making it difficult for individuals with Medicaid coverage to get health care when they need it.

This blog leveraged data from [State Health Compare](#) to analyze rates of physician acceptance of new patients by coverage type. [Read more](#)

### Charting Two Decades of the Evolving Opioid Crisis

It has been over a decade since the U.S. Centers for Disease Control and Prevention (CDC) declared an "epidemic" of overdoses from prescription opioid painkillers in 2011, and today, the opioid crisis is worse than ever—yet it only vaguely resembles those earlier days. This blog examined the history and complicated evolution of the opioid crisis from 2001-2021. [Read more](#)



## 2020 U.S. Alcohol-Involved Deaths Climbed by 26.6%, and Drug Overdose Deaths by 30.6%

The COVID-19 pandemic continues to exacerbate many existing public health issues in the U.S., including rising overdose deaths. From 2019 to 2020 alone, the U.S. alcohol-involved death rate increased by 26.6%, and drug overdose deaths grew by 30.6%. This blog from early 2022 detailed these troubling rising death rates at both the state and national levels. [Read more](#)

## Race/Ethnicity Data in CMS Medicaid (T-MSIS) Analytic Files Updated December 2021 – Features 2019 Data

New data were added to this resource blog that helps researchers understand the completeness of race/ethnicity information in the Transformed Medicaid Statistical Information System (T-MSIS) Analytic Files (TAF). The TAF are an enhanced set of data on beneficiaries in Medicaid and the Children’s Health Insurance Program (CHIP), and can be helpful in evaluating Medicaid/CHIP enrollment, access to services, and quality of care for certain subpopulations. [Read more](#)

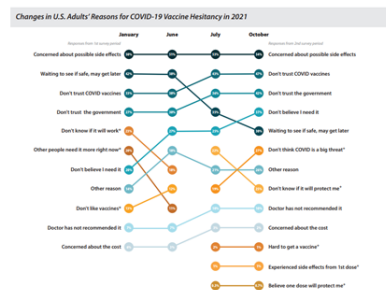


## SHVS Expert Perspective: Tracking the Data on Medicaid’s Continuous Coverage Unwinding

SHADAC’s continued partnership with State Health and Value Strategies (SHVS) is highlighted in this cross-posted issue brief that outlined a phased set of priority measures and provided a model enrollment and retention dashboard template that states can use to monitor both the short-term impacts of phasing out public health emergency (PHE) protections and continuous coverage requirements, as well as longer-term enrollment and retention trends. [Read more](#)

## Understanding the Undercount of Medicaid Enrollees in the 2020 Current Population Survey Health Insurance Coverage Data

SHADAC remained dedicated to translating complex public health topics and data for all audiences in 2022, and our various resources related to the Medicaid undercount are examples of this goal being put to practice. This blog in particular offered a useful primer for understanding the Medicaid undercount within the context of the Current Population Survey (CPS) and is a great supplement to [a recent brief](#) on the topic. [Read more](#)



## COVID-19 Vaccine Hesitancy in the United States has Reached a Plateau: Evidence from the Household Pulse Survey

SHADAC researchers have been closely monitoring vaccine hesitancy related to COVID-19 throughout the course of the pandemic, and this research continued into 2022. In an effort to regularly illuminate barriers to vaccine receipt, this blog looked at rates and reasonings for vaccine hesitancy among U.S. adults (age 18 and older) using Household Pulse Survey (HPS) data from January through October 2021. [Read more](#)

## 2020 NHIS: State vs. National Estimates of Health Insurance Coverage

National Health Statistic Reports provide valuable, state-level estimates on health insurance coverage by subcategories of state Medicaid expansion status, urbanization level, and expanded region based on data from all 50 states and the District of Columbia (D.C.). Using these data, SHADAC created a detailed

infographic that tracks state-level trends in public coverage, private coverage, and those without health insurance coverage for nonelderly adults age 18-64. [Read more](#)

---

[unsubscribe from this list](#) | [update subscription preferences](#)

*Copyright © 2023 University of Minnesota*  
State Health Access Data Assistance Center (SHADAC)  
2221 University Avenue SE, Suite 345, Minneapolis, MN 55414

---

This email was sent to <<Email Address>>

[why did I get this?](#) [unsubscribe from this list](#) [update subscription preferences](#)

State Health Access Data Assistance Center (SHADAC) · 2221 University Ave SE · Suite 345 · Minneapolis, MN 55414 · USA